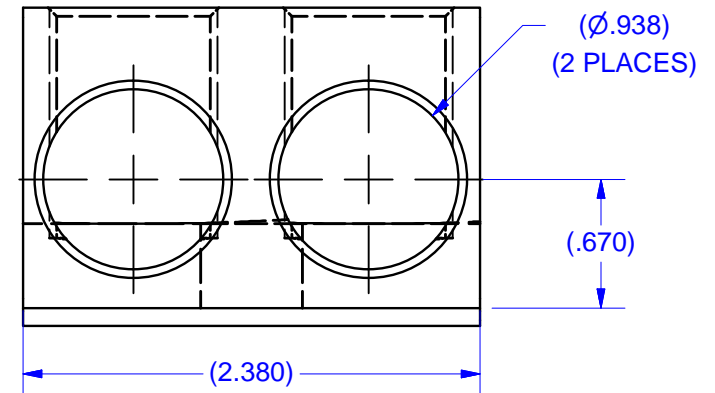
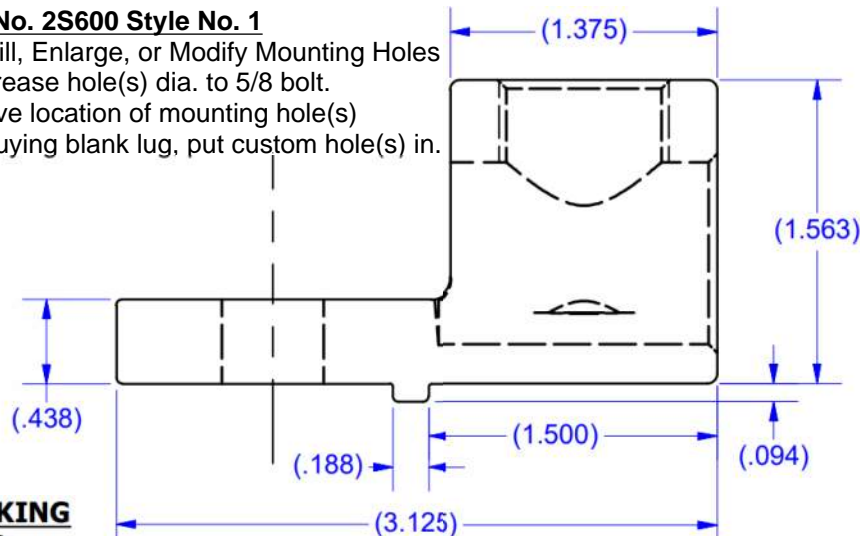


SCREW#14141-M
TIN PLATED ALUMINUM

IHI UL/CSA Installation Guide to Drill or Enlarge Mounting Holes:
<https://lugsdirect.com/PDF Documents/IHI-MTG-HOLE-FIELD-MODS-UL&CSA-CERTIFICATIONS.pdf>

Cat. No. 2S600 Style No. 1

- Drill, Enlarge, or Modify Mounting Holes
- 1) Increase hole(s) dia. to 5/8 bolt.
- 2) Move location of mounting hole(s)
- 3) If buying blank lug, put custom hole(s) in.



MARKING
2S600
IHI
600 kcmil-4
CU9AL
UL LOGO
CSA LOGO

NOT FOR USE WHERE FAILURE CREATES A HAZARD TO HUMAN HEALTH OR SAFETY.
ALL PRODUCTS ARE SUBJECT TO THIS FULL DISCLAIMER: <http://www.ihconnectors.com/disclaimer.html>

FOR FURTHER INFORMATION ON THE PROPER USE OF THIS PRODUCT IN SPECIFIC APPLICATIONS SEE
<http://www.ihconnectors.com/GuideToFlexFlexibleFineStrandedWireCableMechanicalLugsFAQ.html>

<http://www.ihconnectors.com/Technical-Data-Installation.htm>

FLEX WIRE 444-2 KCMIL

| | | | | |
|--|-------------------------|---|--------------------------------------|------|
| THIS DRAWING AND DESIGN ARE THE PROPERTY OF INTERNATIONAL HYDRAULICS, INC., CLEVELAND, OHIO, AND MAY NOT BE DUPLICATED, USED FOR THE BASIS OF DESIGN OR MANUFACTURE WITHOUT THE WRITTEN PERMISSION OF INTERNATIONAL HYDRAULICS, INC., CLEVELAND, OHIO. | | INTERNATIONAL HYDRAULICS, INC. | | |
| GENERAL TOLERANCES -.015 (-0.038) | | TITLE: 2S600TP CONNECTOR | | |
| MATERIAL: 6061-T6 (EXT14309) | SIZE: | DRAWN BY: TDS | DWG NO.: 2S600TP-M (SALES) | REV: |
| FINISH: TIN PLATE EMS | DATE: 4/22/09 | THIS IS A CAD DRAWING, DO NOT MANUALLY REVISE | | |